



JOB NAME:

CAT#:

TYPE:

### APPLICATIONS

The RKG LED is a specification grade, Volumetric Recessed LED Retrofit Kit which provides smooth and uniform ambient lighting for all commercial and industrial buildings with recessed configurations. Reflected light from matte surfaces provide a softened appearance to the modern office environment.

Housing is die-formed and embossed code 22 gauge steel. Luminaire body finish is high reflectance baked white enamel, with matte white reflectors. Wiring knockouts are provided on the back of housing. Center diffuser snaps into place; no tools are required for removal.

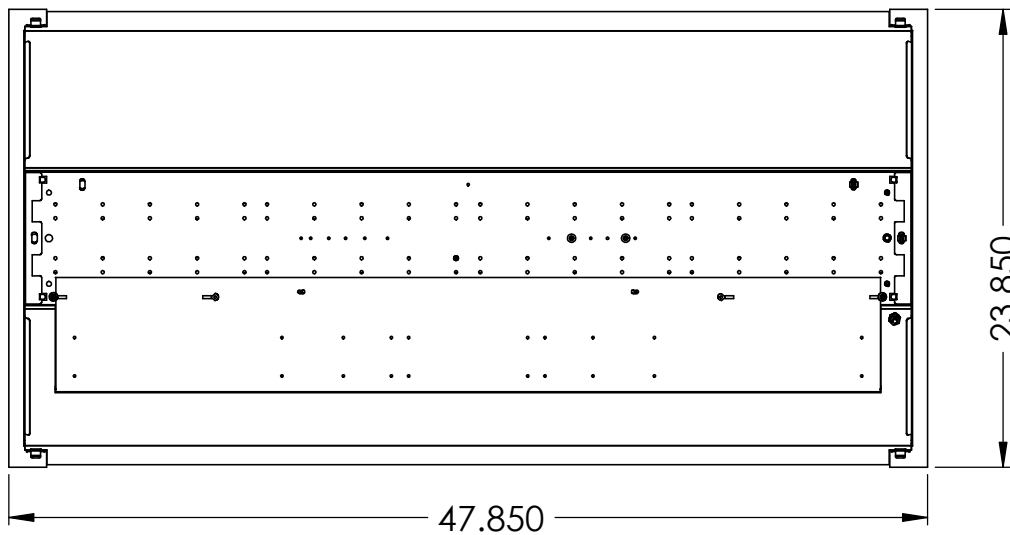


### FEATURES & BENEFITS

- Volumetric recessed luminaire provides a low glare light source
- Matte white reflective surface for soft, uniform light distribution
- 0-10V dimming driver standard
- Easy access for quick wiring
- Suitable for dry and damp locations
- cETL<sub>us</sub> Listed for damp locations up to 88 watts
- Min CRI 82

### DIMENSIONS

2x4 VIEW





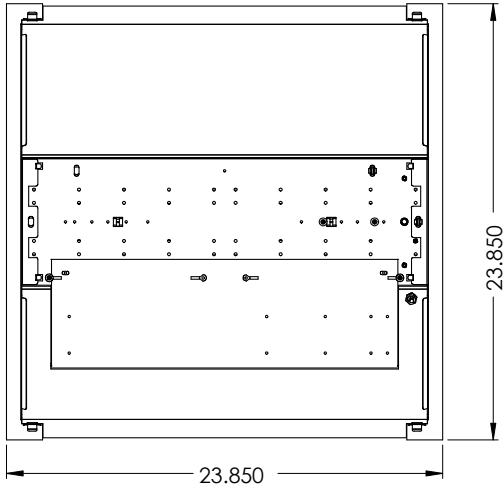
JOB NAME:

CAT#:

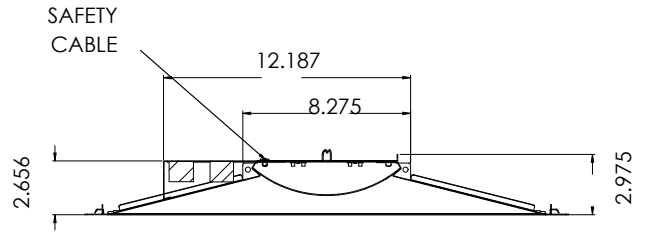
TYPE:

**DIMENSIONS**

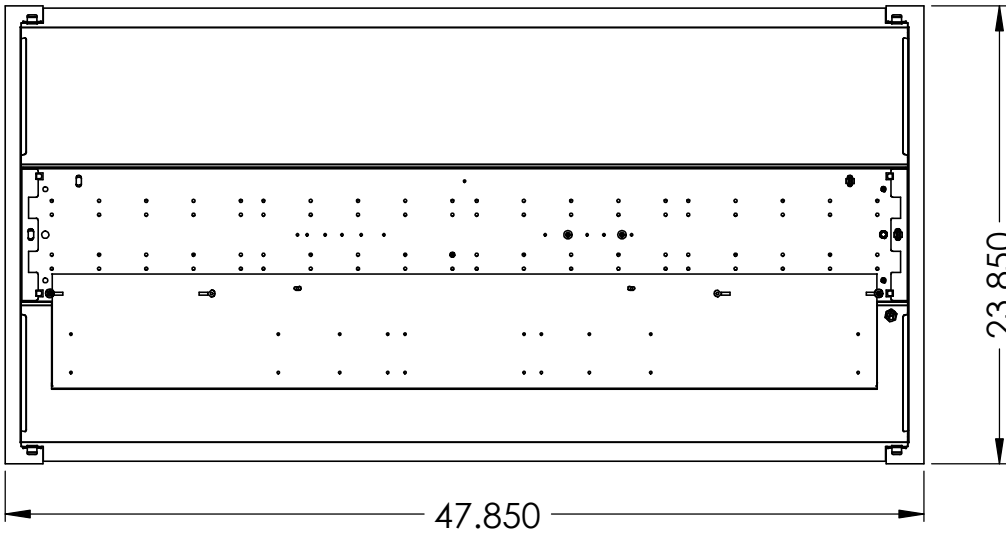
**2x2 VIEW**



**End**



**2x4 VIEW**





JOB NAME:

CAT#:

TYPE:

**ORDERING**

EXAMPLE: RDIS14 LED15 DMV FR 30 EM SNS200

RKG		LED		5. DRIVER		6. LENS	7. COLOR TEMP
1. SERIES	2. SIZE	3. GEAR	4. WATTAGE/LUMENS <sup>1</sup>				
<b>RKG</b>	<b>14</b> 1X4 <b>22</b> 2x2 <b>24</b> 2x4	<b>LED</b>	<b>20</b> 20 Watts 3000 Lumens <b>25</b> 25 Watts 3800 Lumens <b>33</b> 33 Watts 5250 Lumens <b>44</b> 44 Watts 6600 Lumens	<b>DMV</b> 120-277V Multivolt 0-10V Dimmable <b>SDMV</b> Step dimming Multivolt <b>D120</b> Triac Dimming 120VAC	<b>FR</b> Frosted Lens	<b>80CRI</b> <b>30</b> 3000K <b>35</b> 3500K <b>40</b> 4000K <b>50</b> 5000K	
			<b>2X2 Standard</b>				
			<b>2X2 High Lumen</b>				
			<b>2X4 Standard</b>				<b>90CRI</b>
			<b>20</b> 20 Watts 3000 Lumens <b>25</b> 25 Watts 3800 Lumens <b>35</b> 35 Watts 5250 Lumens <b>45</b> 45 Watts 6600 Lumens <b>50</b> 50 Watts 7300 Lumens				<b>927</b> 2700K <b>930</b> 3000K <b>935</b> 3500K <b>940</b> 4000K
			<b>2X4 High Lumen</b>				
			<b>65</b> 65 Watts 9300 Lumens <b>70</b> 70 Watts 10000 Lumens <b>88</b> 88 Watts 12000 Lumens				

8. ACCESSORIES (O) <sup>2</sup>		9. SENSOR (O) <sup>2</sup>	
<b>EM14</b>	Emergency Battery Pack 14W	<b>SD</b>	Occupancy Sensor w/ Daylight Harvesting
<b>WP</b>	6 ft. 3 wire 18 gauge whip (non-dimming)		
<b>WP4</b>	6 ft. 4 wire 18 gauge whip (non-dimming EM)		
<b>WP5W</b>	6 ft. 5 wire 18 gauge whip		
<b>WP6W</b>	6 ft. 6 wire 18 gauge whip (dimming EM)		

**Notes:**  
<sup>1</sup>Consult for other wattages  
<sup>2</sup>(O) is optional

**NOTE:** Values shown are typical or recorded under standardized conditions at 25°C. Actual performance may vary based on environment or application. Specifications are subject to change without notice. We reserve the right to change design, materials, LED's and finish in any way that will not alter installed appearance or reduce function and performance.

