



JOB NAME:

CAT#:

TYPE:

## APPLICATIONS

This High Output Multi-Function LED strip offers a family of three different strips to meet a variety of applications in warehouses, retail and utility areas. Available in a cost effective and high output open strip version, a specially designed LED frosted lens version, and a narrow focused reflector version. Each version is ideal for different applications and together make a perfect family of products for many industrial and back of house commercial applications. These fixtures can be surface or pendant mounted. Driver box hinges open for easy access to the driver without removing the lens or reflector. Consult for different finishes and different sizes.

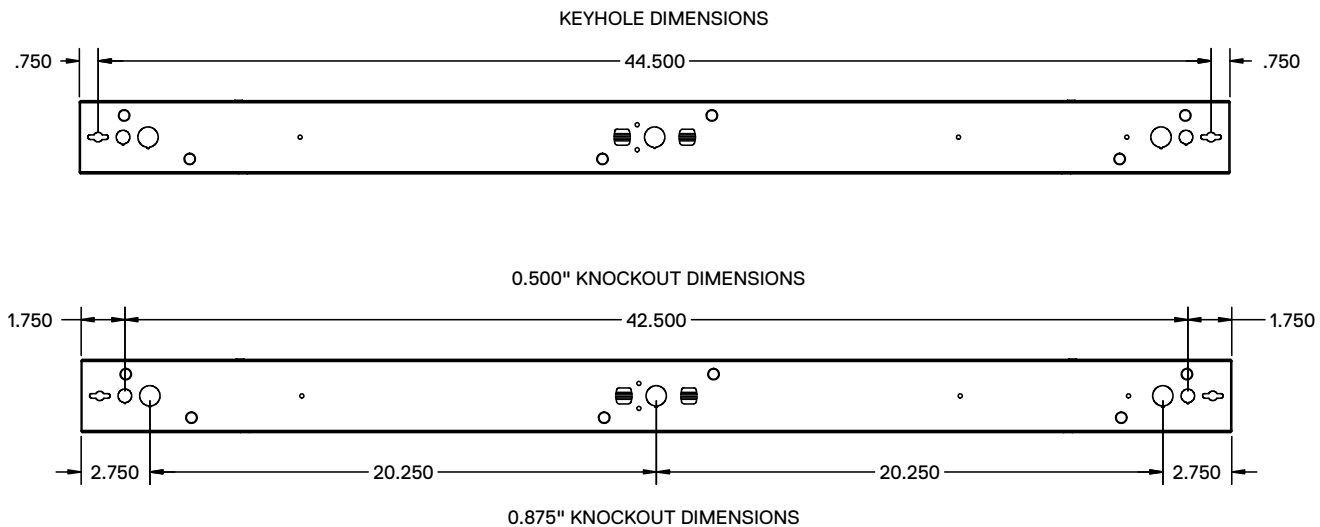
Housing is die-formed and embossed code 22 gauge steel. Finish is high reflectance baked white enamel. Wiring knockouts are provided on back and end of housing. Ballast cover, reflector or lens attach without tools with hinged construction to simplify ballast access.

## FEATURES & BENEFITS

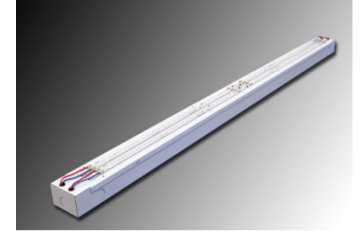
- Five years warranty
- $L_{70} > 50,000$  hrs.
- Min CRI 80
- Surface mount, chain hung, double stem
- Size: 46"L x 2.925"W x 1.778"H
- cETL<sub>US</sub> Listed

## DIMENSIONS

### 4 FT



Narrow Reflector



Open Strip



Frosted Lens

Dimensions and specifications subject to change without notice.





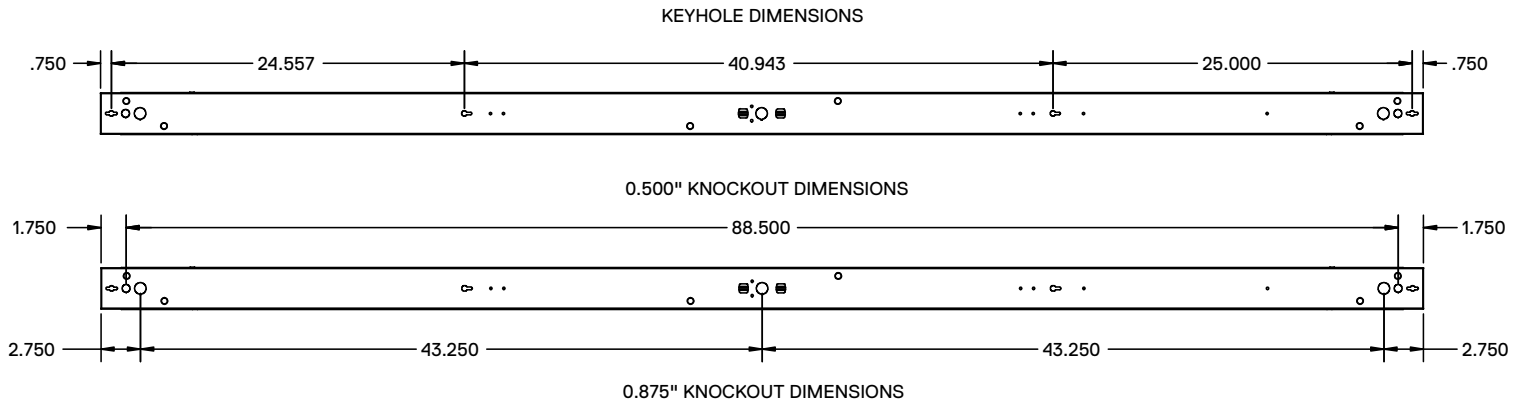
JOB NAME:

CAT#:

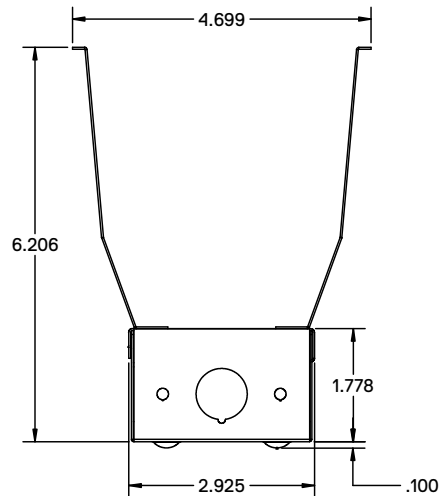
TYPE:

## DIMENSIONS

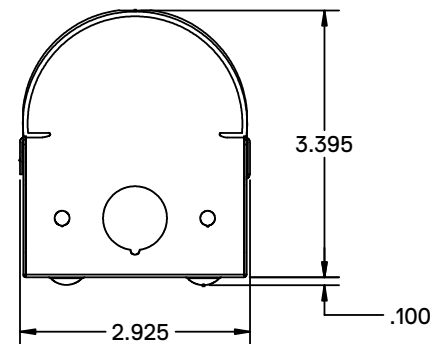
8 FT



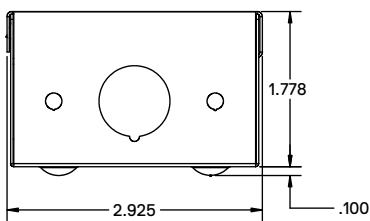
### Reflector End View



### Lens End View



### Open Strip End View



Dimensions and specifications subject to change without notice.





JOB NAME:

CAT#:

TYPE:

## ORDERING

EXAMPLE: MRRS 48 LED 28 DMV WH 30 EM

| MRRS          |                  | LED                                  |                            |  |  |                                  |   |
|---------------|------------------|--------------------------------------|----------------------------|--|--|----------------------------------|---|
| 1. SERIES     | 2. LENGTH        | 3. GEAR                              | 4. WATTAGE/LUMENS          |  | 5. DRIVER                                | 6. FINISH                        | 7. LENS                                       |
| MRRS          | 46 46"<br>92 92" | LED                                  | 48"                        |  | DMV 120-277V Multivolt<br>0-10V Dimmable | WH White<br>BN Brushed<br>Nickel | Blank No Lens<br>FR <sup>3</sup> Frosted Lens |
|               |                  |                                      | 25 25 Watts 3775 Lumens    |  | SDMV Step dimming<br>Multivolt           | BK Black<br>BZ Bronze            |   |
|               |                  |                                      | 45 45 Watts 6795 Lumens    |  | DHV 347-480VAC<br>0-10V Dimming          |                                  |   |
|               |                  |                                      | 50 50 Watts 7207 Lumens    |  | D347V 347VAC<br>0-10V Dimming            |                                  |   |
|               |                  |                                      | 50 50 Watts 7207 Lumens    |  | TDMV Triac Dimming<br>120-277VAC         |                                  |   |
|               |                  |                                      | 90 90 Watts 13590 Lumens   |  | D120 Triac Dimming<br>120VAC             |                                  |   |
|               |                  |                                      | 108 108 Watts 16308 Lumens |  | D277 Triac Dimming<br>277VAC             |                                  |   |
| 8. COLOR TEMP |                  | 9. EMERGENCY(O) <sup>1</sup>         |                            | 10. REFLECTOR(O) <sup>1</sup>                                    |  |                                  |   |
| 30 3000K      |                  | EM 10W ~1200 Lumen<br>Battery backup |                            | Blank No Reflector<br>XWN <sup>2</sup> White Narrow<br>Reflector |  |                                  |   |
| 35 3500K      |                  |                                      |                            |  |  |                                  |   |
| 40 4000K      |                  |                                      |                            |  |  |                                  |   |
| 50 5000K      |                  |                                      |                            |  |  |                                  |   |

## ACCESSORIES

|                   |   |
|-------------------|---|
| A-HC301WH         | Cable kit with 4 cable + power feed cable<br>incl. with white canopy                              |
| A-HC302WH         | Cable kit with 12' cable + power feed cable incl.<br>with white canopy                            |
| A-HC3015WWH       | Cable kit with 4' cable + power feed 0-10V dimming<br>cable included with white canopy (5 wire)   |
| A-HC3025WWH       | Cable kit with 12' cable + power feed 0-10V dimming.<br>Cable included with white canopy (5 wire) |
| A-2SCS24WH        | Two Stem kits with 24" Stem, Canopy and Mounting<br>hardware for a 4' fixture                     |
| AC120- TOGGLE-2PK | Aircraft cable & toggle set - 10ft  |

### Notes:

<sup>1</sup>O is Optional

<sup>2</sup>W30 - White reflector reduces lumen output approximately ~10%.

<sup>3</sup>FR - Frosted Lens option reduces lumen output approximately ~25%.

**NOTE:** Values shown are typical or recorded under standardized conditions at 25°C. Actual performance may vary based on environment or application. Specifications are subject to change without notice. We reserve the right to change design, materials, LED's and finish in any way that will not alter installed appearance or reduce function and performance.

