



JOB NAME:

CAT#:

TYPE:

APPLICATIONS

The SRDIS LED is a specification grade LED surface mounted direct/indirect center diffuser luminaire which provides smooth and uniform ambient lighting for all commercial and industrial buildings. Reflected light from matte surfaces providing a softened perforated appearance to the modern office environment.

Housing is die-formed and embossed code 20 gauge steel. Luminaire body finish is high reflectance baked white enamel, with matte white reflectors. Wiring knockouts are provided on the back of housing. Center diffuser snaps into place; no tools are required for removal. Listed by and bears ETL label.

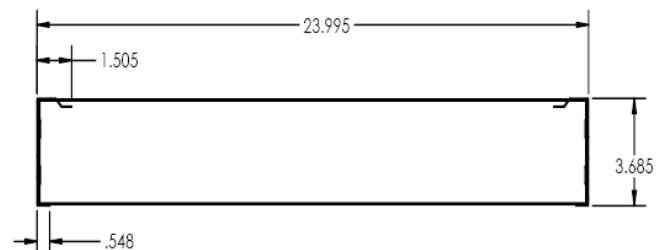
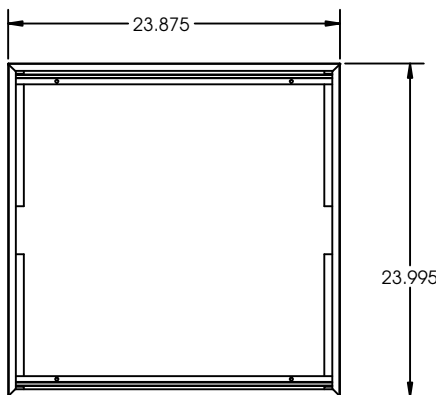


FEATURES & BENEFITS

- Direct/indirect provides a low glare light source
- Matte white reflective surfaces for soft, uniform light distribution
- Multiple diffuser options available
- Over 80% efficiency when used with frosted and acrylic diffuser
- 0-10V dimming driver standard
- Easy access plate for quick wiring
- ETL_{us} listed for damp locations

DIMENSIONS

2X2



Dimensions and specifications subject to change without notice.





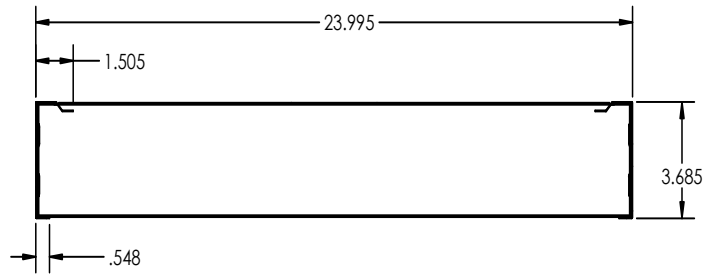
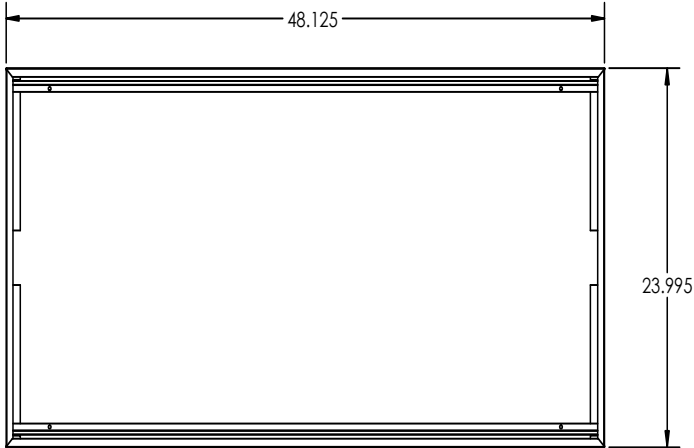
JOB NAME:

CAT#:

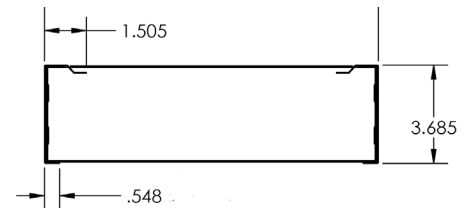
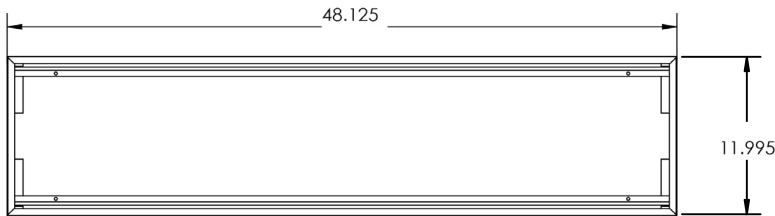
TYPE:

DIMENSIONS

2X4



1X4





JOB NAME:

CAT#:

TYPE:

ORDERING

EXAMPLE: SRDISE 14 LED 15 DMV FR 30 EM SNS200

SRDIS		LED																							
1. SERIES	2. SIZE	3. GEAR	4. WATTAGE/LUMENS		5. DRIVER		6. DIFFUSER		7. COLOR TEMP		8. EM														
SRDIS	14	1X4	LED	1x4		DMV	Dimming multivolt 120-277V 0-10V	FR	Frosted	30	3000K	EM	10 Watt 1300 Lumen Battery Backup												
	22	2X2		15	15 Watts 1950 Lumens									PF	Perforated Basket	35	3500K	EM4F	Emergency Bat- tery Backup 4W ~450 Lumens						
	24	2X4		20	20 Watts 2600 Lumens															RL	Ribbed Acrylic Lens	40	4000K	EM7	Emergency Battery Pack 7W ~ 1300 Lumens
				25	25 Watts 3250 Lumens																				
				33	33 Watts 4290 Lumens																				
					2x4																				
					20									20 Watts 2880 Lumens											
					25									25 Watts 3600 Lumens											
					30									30 Watts 4320 Lumens											
					35									35 Watts 5040 Lumens											
					40									40 Watts 5760 Lumens											
					45									45 Watts 6480 Lumens											
					50									50 Watts 7200 Lumens											
					54									54 Watts 7780 Lumens											
			2x2																						
			15	15 Watts 1950 Lumens																					
			20	20 Watts 2600 Lumens																					
			25	25 Watts 3250 Lumens																					
			33	33 Watts 4290 Lumens																					

Lumens are subject to a tolerance of ±10%. Wattage is approximate and subject to a tolerance of ±5%

NOTES:

¹Consult factory for Step Dimming Options

NOTE: Values shown are typical or recorded under standardized conditions at 25°C. Actual performance may vary based on environment or application. Specifications are subject to change without notice. We reserve the right to change design, materials, LED's and finish in any way that will not alter installed appearance or reduce function and performance.

