

Commercial Retrofit Kit Installation Instructions



MOBERN
LIGHTING

STEP 1

Turn off Power.

STEP 2

Remove existing reflector and disconnect whip from junction box.

STEP 3

Attach Vantage light engine power lead to power of existing junction box.

STEP 4

Insert light engine through existing hole in ceiling

STEP 5

Attach Vantage clips to existing frame, use the clips shaped like an L on horizontal frames with the long legs on the pan or the clips shaped like a U on a vertical flange with the long sides on the inside of the flange.

STEP 6

Attach reflector with screws through the key slots in the reflector to the light engine housing.

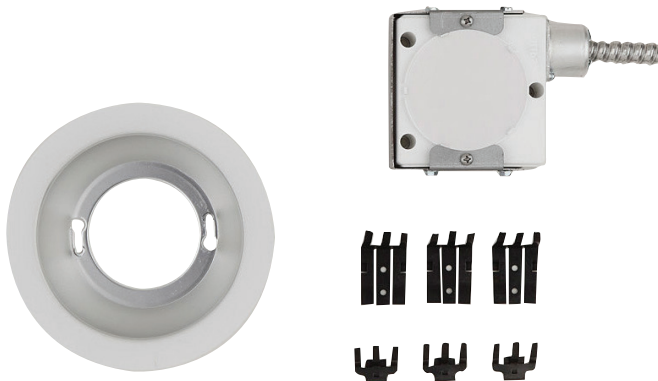
STEP 7

Install reflector up into frame.

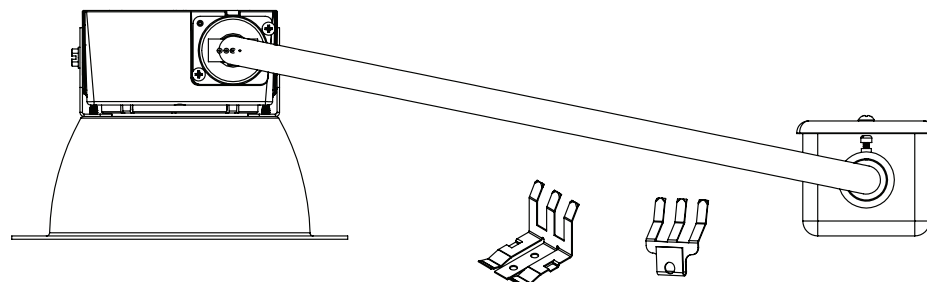
STEP 8

Energize.

COMMERCIAL RETROFIT KIT CONTENTS



COMMERCIAL RETROFIT KIT



Mobern reserves the right to change components, finishes or design details in any manner which does not alter the installed appearance or reduce performance and intended function.