

Commercial Remodeler Kit Installation Instructions



STEP 1

Insert recessed pan into the ceiling open and rotate pan into position as note in Figure A and Figure B.

STEP 2

Secure recessed pan to ceiling using fasteners (Drill Screws) or held in position with the remodeler clips supplied from the factory.

STEP 3

Run electricity to Vantage remodeler junction box. Then attach Vantage light engine power lead to remodeler junction box.

STEP 4

Insert light engine through existing hole in the ceiling

STEP 5

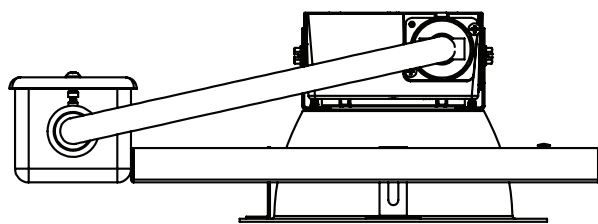
Attach reflector with screws through key slots in the reflector to the light engine housing.

STEP 6

Install reflector into recessed pan (pan prefitted with friction clips).

STEP 7

Energize



Cut 2 1/2" Out

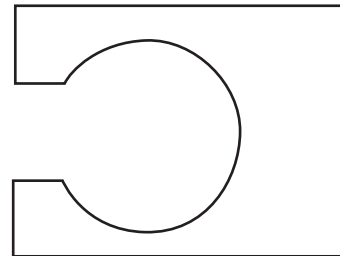


Figure A

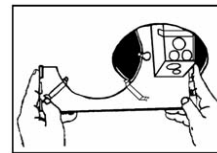
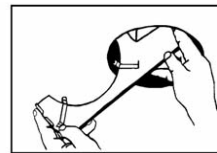
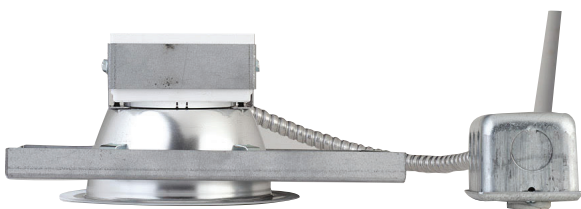


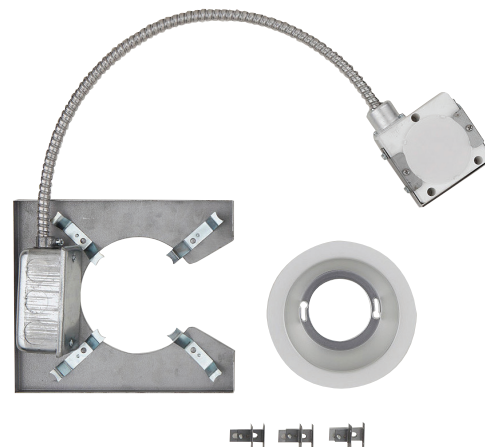
Figure B



COMMERCIAL REMODELER



COMMERCIAL REMODELER KIT CONTENTS



Mobern reserves the right to change components, finishes or design details in any manner which does not alter the installed appearance or reduce performance and intended function.