



JOB NAME:

CAT#:

TYPE:

APPLICATIONS

The Splice acoustic box from Mobern explores geometric design elements, combining diagonal planes within a square drum. Sound-absorbing acoustic material used adds dimension and functionality to open-space areas. The Splice series allows you to take control of two human senses, sound and light, by adding this contemporary fixture to areas where sound reverberations are prevalent. Visitors will be unsuspecting of the technology but will appreciate the dimensional, brightening aesthetic of the linear grid. The grand scale of this acoustic box (4'X4') makes it the perfect solution for open- office spaces, lobbies, restaurants, or anywhere where sound reduction and integrated design is desired.

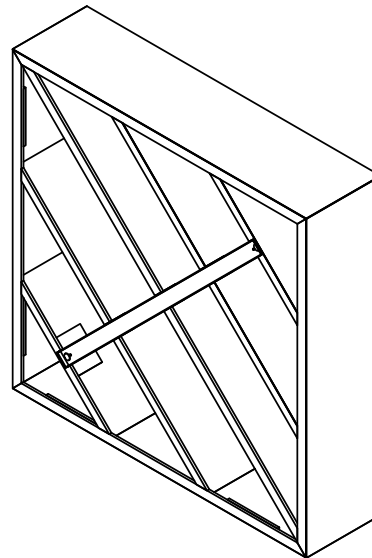
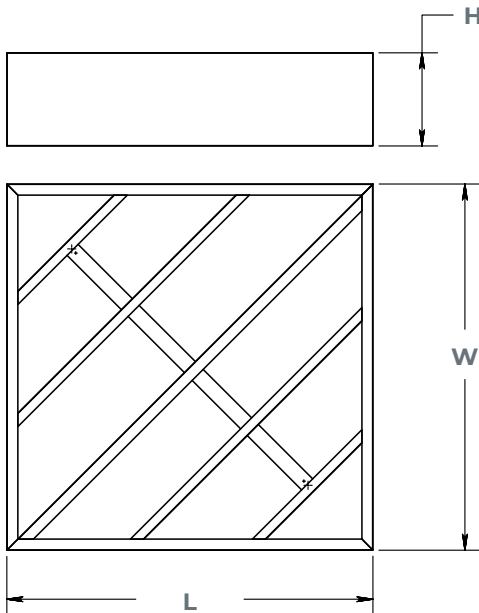
FEATURES & BENEFITS

- 30+ acoustic material colors available
- 6' pendant mount hanging kit accommodates most ceiling types
- CRI >80 (90 CRI available)
- >50,000 hrs of L₇₀ LED life
- 0-10 Volt dimmable 120-277V
- Power factor >0.90
- 5 year warranty



DIMENSIONS

Part	L	W	H	L = Length W = Width H = Height
AWB47X47	47"	47"	12"	



Dimensions and specifications subject to change without notice.





JOB NAME:

CAT#:

TYPE:

ORDERING

EXAMPLE: AWB P 47X47 LED 28 DMV 40 A53

AWB		P		LED								
1. SERIES	2. MOUNTING	3. WIDTHXLENGTH		4. GEAR	5. WATTAGE/LUMENS		6. DRIVER		7. COLOR TEMP		8. FLAIR ¹	
AWB	P Pendant	47X47	47"W x 47"L	LED	<u>47x47 in.</u> 28	28 Watts	3200 Lumens	DMV	120-277V Multivolt 0-10V Dimmable	40	4000K	A53 Lava A50 Caramel A48 Avocado

9. MATERIAL CLASS

- Blank Class B
- A Class A

Notes:

¹ Personalize your fixture by choosing a standard acoustic material color from the guide on the next page

Dimensions and specifications subject to change without notice.



JOB NAME:

CAT#:

TYPE:

ACOUSTIC MATERIAL COLOR OPTIONS



07 - White



44 - Ivory



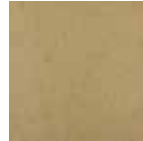
42 - Cream



52 - Latte



02 - Taupe



53 - Smoky
Beige



09 - Deep
Blue



21 - Indigo
Blue



19 - Denim



56 - Azure



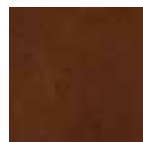
30 - Blue



18 - Arctic Ice



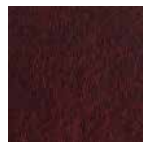
54 - Espresso



49 - Brunette



35 - Speckled
Earth



43 - Lava



36 - Berry



45 - Big Red



55 - Tangerine



41 - Marigold



50 - Caramel



51 - Sunkist
Orange



22 - Yellow



10 - True
Black



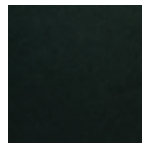
17 - Dark
Gray



11 - Steel



34 - Pure
Gray



47 - Emerald



05 - Dark
Green



12 - Moss



39 - Green
Apple



48 - Avocado



08 - Eggplant

Dimensions and specifications subject to change without notice.