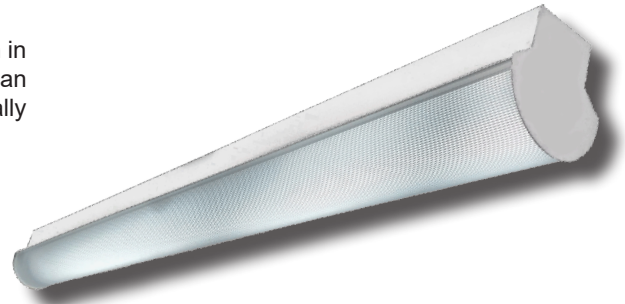


APPLICATIONS

Full body micro silhouette makes a bold statement with a minimal design in post painted matte white finish (consult factory for other finishes). Fixture can be surface mounted on the wall or ceiling or pendant mounted with specially engineered cable mounting kit.

FEATURES & BENEFITS

- ◆ Housing is formed and welded 22 gauge steel, that is chemically treated and powder coated for a beautiful finish and to resist corrosion
- ◆ Can be mounted individually or in a continuous row
- ◆ Ribbed frosted lens is standard
- ◆ Knockouts on back and ends accept standard electrical fittings (by others). Consult factory.
- ◆ Surface mountable to a wall or ceiling
- ◆ Pendant or cable mountable
- ◆ Whips, fuses and cord sets. See options page in Buyers' Guide or contact the factory for more.



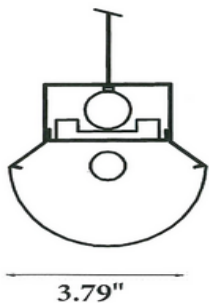
ORDERING DATA

EXAMPLE: LDA-154RFMVWH

LDA		RF					Options & Acc.	
Series	# of Lamps	Lamp Type		Diffuser	Driver	Finish		
LDA	1 1 Lamp 2 2 Lamps	14	22" T5	RF Ribbed Frosted	MV 120-277VAC Multivolt DMV 120-277VAC Triac & 0-10V Dimming	WH White BK Black SL Silver RD Red	Consult Buyers' Guide or Factory **See chart below for whip & cord ordering options	
		24	22" T5HO					
		28	46" T5					
		28tan	2-46" Tandem T5					
		54	46" T5HO					
		54tan	2-46" Tandem T5HO					

**Cord & Whip Ordering Chart (Add to End of Fixture Part Number)

Part No.	# of Wires	Length	End Fitting	Finish	Voltage	Amps (TL Only)
WP - Whip CS - Cordset	(Blank) 3 Wire 4 - 4 Wire 5 - 5 Wire 6 - 6 Wire	(Blank) 6 feet 8 - 8 feet 10 - 10 feet 12 - 12 feet 15 - 15 feet	(Blank) No Plug P* - Standard Plug TL* - Twist Lock	BK - Black WH - White	(Blank) 120-277V 120 - 120V 277 - 277V 347 - 347V 480 - 480V	15 - 15 Amps 20 - 20 Amps



3.93"



Dimensions:

-3.93"H x 3.79"W x 23.60"L
-3.93"H x 3.79"W x 47.20"L
-3.93"H x 3.79"W x 94.40"L

Dimensions and specifications subject to change without notice.



◆ 800-444-WATT ◆ www.mobern.com ◆

8200 Stayton Dr., Ste. 500, Jessup, MD 20794

CAT#

JOB NAME

TYPE