

JOB NAME:
CAT#:
TYPE:

APPLICATIONS

Introducing the Mobern VWN-LED Premium grade enclosed and gasketed vaportight fixture. This Energy-Saving High Performance LED Vaportight is ideal for both indoor and outdoor applications where dust and water resistance is required. Ideal for parking garages, cold storage, marinas, barns, canopies, car washes, poultry farms, agricultural applications and other areas susceptible to corrosive and wet conditions.

High quality enclosed fiberglass fixture features a unique continuous poured gasket which completely fills channel for maximum seal integrity. Diffuser is held in place with POM retaining latches. Stainless steel latches are recommended for the following applications: agriculture, car washes, food processing and swimming pools. Hole is 7/8" diameter and is provided with a plastic plug on one end for conduit attachment. Offset mounting pads which keeps luminaire level and slightly off of mounting surface are formed within the housing. Standard diffuser is high impact acrylic with textured pattern designed for high efficiency while providing reduced glare.



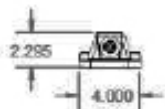
FEATURES & BENEFITS

- Designed for easy assembly
- Ease of Installation and Maintenance
- Visually familiar light sourcing
- Poured in place gasket seals the enclosures from most hostile environments
- Economical Mounting System can provide dramatic savings on installation labor, thus reducing costs
- Very tough diffusers resist breakage and reduce replacement and maintenance costs
- Available in 4' length only
- Frosted lens for reducing direct glare and image of the LED
- Optional durable stainless steel mounting hardware
- No need to drill through the housing for installation
- Optional stainless steel bail for chain/cable hung installations
- Consult for other options

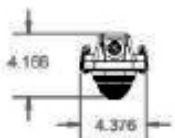


DIMENSIONS

Housing Only

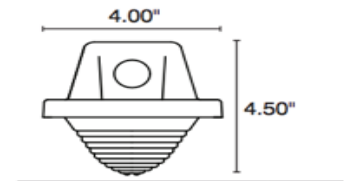


RC/RF Lens



End View

RC-Ribbon, Clear
 RF-Ribbon, Frosted
 SC-Smooth, Clear*
 SF-Smooth, Frosted*
 *Increase depth by 0.25"





JOB NAME:

CAT#:

TYPE:

ORDERING

EXAMPLE: VWN 4 LED 48 DMV RF 30 EM OS CS PC120 SL

VWN		LED										
1. SERIES	2. SIZE	3. GEAR	4. WATTAGE/LUMENS		5. DRIVER		6. LENS MATERIAL		7. LENS		8. COLOR TEMP	
VWN	4 4 ft	LED	35 35W 4000 Lumens		DMV 120-277V Multivolt	Blank High Impact	RF Ribbed Frosted	30 3000K				
LED			48 48W 5600 Lumens		0-10V Dimmable	P Polycarbonate	Deep	35 3500K				
Vaportight			56 56W 6400 Lumens		SDMV Step dimming Multivolt		RC Ribbed Clear	40 4000K				
			*consult for other wattages		D347V 347VAC 0-10V Dimming		Deep	50 5000K				
					D120 Triac Dimming 120VAC		SF Smooth Frosted Deep ²					
					D277 Triac Dimming 277VAC		SC Smooth Clear Deep ²					

9. EM (O) ⁴		10. SENSOR (O) ³		11. CORD (O) ³		12. PHOTOCELL (O) ³		13. LATCH (O) ³	
EM	Emergency Battery Pack 10W ~ 1700 lumens	OS	Occupancy Sensor	CS	Cord 1/3 6"	PC120	Photocell 120V	SL	Stainless Steel Latches
EM-CW	Emergency Battery Pack 10W Cold Weather	OSW	Occupancy Sensor - Wet Location			PC277	Photocell 277V		
EM5	Emergency Battery Pack 5W ~ 850 Lumens	OSC	Occupancy Sensor Cold Temperature						
		OSD	Occupancy Sensor - 0-10V Dimmable						
		SS	Occupancy Sensor - Internal Microwave						

ACCESSORIES

VW-MB1L Mounting basket (1) 2 required

Notes:

- ¹Consult for other wattages
- ²Not available in polycarbonate
- ³(O) is optional

NOTE: Values shown are typical or recorded under standardized conditions at 25°C. Actual performance may vary based on environment or application. Specifications are subject to change without notice. We reserve the right to change design, materials, LED's and finish in any way that will not alter installed appearance or reduce function and performance.

