

JOB NAME:
CAT#:
TYPE:

APPLICATIONS

Give your facility a clean and sleek look with this LED premium strip retrofit kit. This fixture is sure to enhance any environment, provide energy savings, and give better quality lighting. This fixture is cost effective and makes this perfect for: schools, retail, warehouse, storage or any other facility area currently using strip fixtures.



FEATURES & BENEFITS

- Rounded Lens
- Available in 24", 48", and 96" (2', 4', & 8') lengths
- Easy assembly and maintenance

ORDERING

EXAMPLE: RKFSF 24 LED 12 DMV FR 30 EM SSM

RKFSF		LED					
1. SERIES	2. SIZE	3. WIDTH	4. GEAR	5. WATTAGE/LUMENS	6. DRIVER	7. LENS	8. COLOR TEMP
RKFSF	24 24"	Blank 4.25"	LED	24 in.	DMV 120-277V	FR Frosted	30 3000K
LED	48 48"	*consult for other options		12 12 Watts 1200 Lumens	Multivolt		35 3500K
Premium Strip Retrofit Kit	96 96"			24 24 Watts 2400 Lumens	0-10V		40 4000K
				48 in.	Dimmable		50 5000K
				24 24 Watts 2600 Lumens			
				48 48 Watts 5400 Lumens			
				57 57 Watts 6200 Lumens			
				96 in.			
				62 62 Watts 6600 Lumens			
				114 114 Watts 12400 Lumens			
9. EM		10. SENSOR					
EM	10 Watts, 1300 Lumens, Battery Backup	SSM Integral Microwave Sensor					

ACCESSORIES

A144-2 (2)V-hooks and (2) 2 ft chains

NOTE: Values shown are typical or recorded under standardized conditions at 25°C. Actual performance may vary based on environment or application. Specifications are subject to change without notice. We reserve the right to change design, materials, LED's and finish in any way that will not alter installed appearance or reduce function and performance.





JOB NAME:

CAT#:

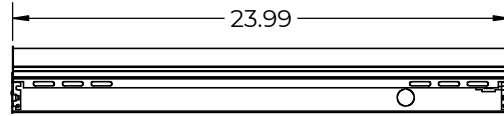
TYPE:

DIMENSIONS

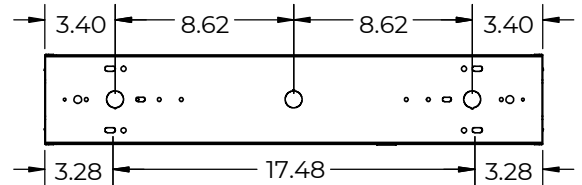
W x L x H in inches

- 24 in: 4.25"W x 24.00"L x 0.50"H
- 48 in: 4.25"W x 48.00"L x 0.50"H
- 96 in: 4.25"W x 96.00"L x 0.50"H

2FT

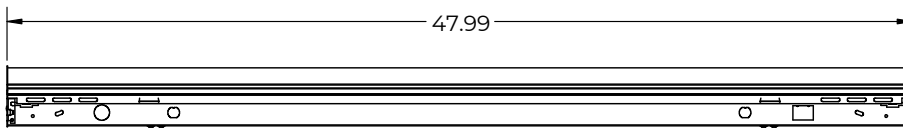


.875 KNOCKOUT DISTANCES

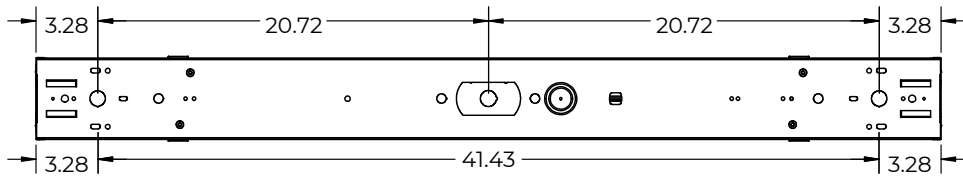


HANGING DIMENSIONS

4FT

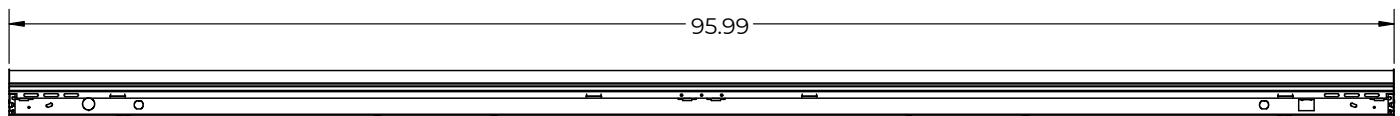


.875 KNOCKOUT DISTANCES

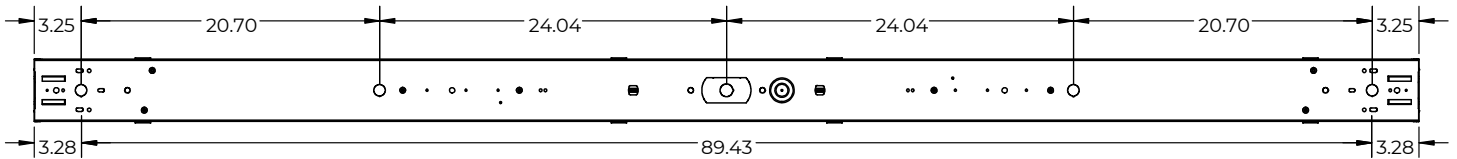


HANGING DIMENSIONS

8FT



.875 KNOCKOUT DISTANCES



HANGING DIMENSIONS

NOTE: Values shown are typical or recorded under standardized conditions at 25°C. Actual performance may vary based on environment or application. Specifications are subject to change without notice. We reserve the right to change design, materials, LED's and finish in any way that will not alter installed appearance or reduce function and performance.

