

APPLICATIONS

LED retrofit kit, converts an existing strip to an efficient LED luminaire. Material is die-formed 22 gauge steel, with high reflectance baked white enamel finish



FEATURES & BENEFITS

- ◆ Easy assembly and maintenance
- ◆ Available in 48" and 96" (4' & 8' lengths). Consult for 2', 3', and 6'
- ◆ MIN CRI 80
- ◆ ETL listed for damp location
- ◆ Estimated $L_{70} > 60,000$ hrs at 25°C



Frosted lens accessory reduces LED glare

ORDERING DATA

EXAMPLE: RKBC48424DMV30

RKBC		Length		Width		LED		Wattage/Lumens		Driver		Color Temp		
Series						Gear								
RKBC	48	48 inch		4	4.25" inch		LED	4 ft.		DMV	120-277VAC		30	3000K
	96	96 inch		5	5.00" inch			24	24Watts		3475Lumens	0-10V	35	3500K
								30	30Watts	4310Lumens	Dimmable	40	4000K	
								35	35Watts	4920Lumens	SDMV Step Dimming	50	5000K	
								48	48Watts	6475Lumens		120-277VAC		
								57	57Watts	7755Lumens	100%-40%			
								8 ft.		*Consult for Triac dimming				
								24	24Watts	3475Lumens				
								48	48Watts	6475Lumens				
								57	57Watts	7755Lumens				
								70	70Watts	9840Lumens				
								97	97Watts	12950Lumens				
								118	118Watts	15510Lumens				

*Consult for other wattages

ACCESSORIES

- A69** -Wireguard per 4 ft.
- L1085** -Wireguard per 4 ft. (order 2 for tandem)

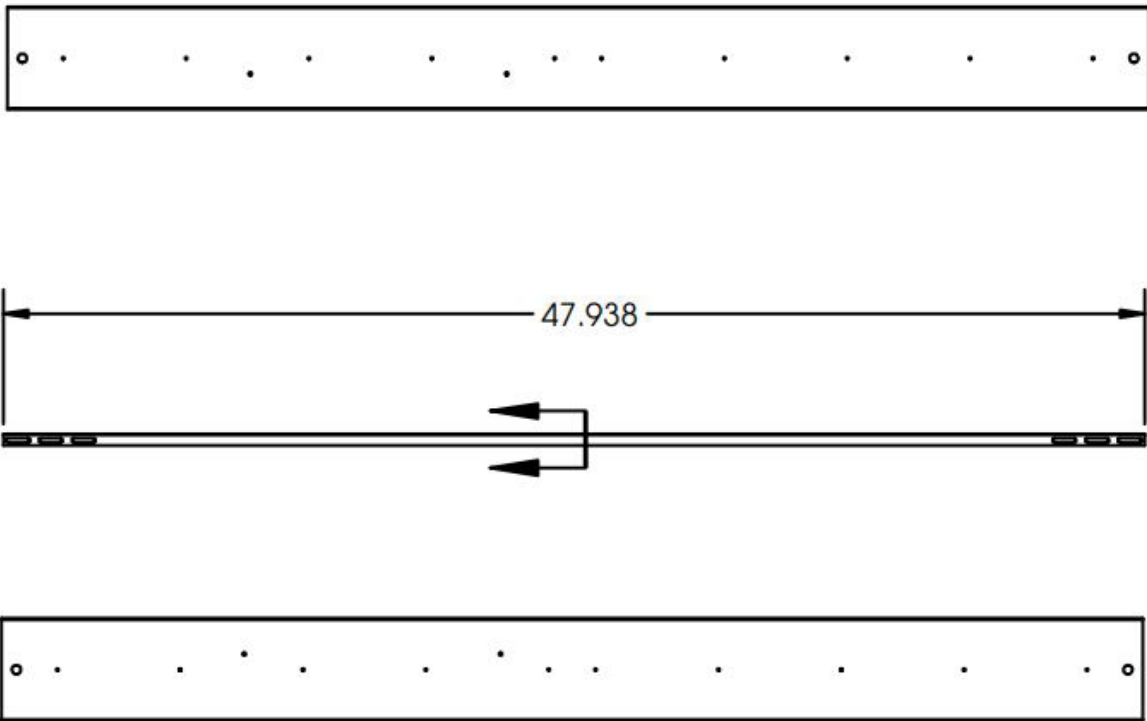
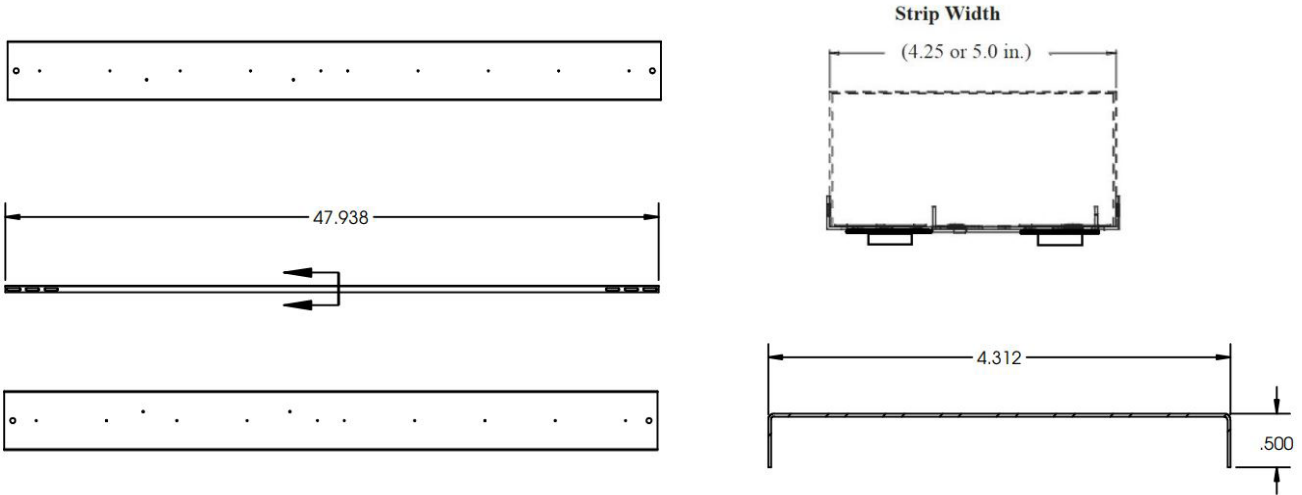
Dimensions and specifications subject to change without notice.



◆ 800-444-WATT ◆ www.mobern.com ◆
8200 Stayton Dr., Ste. 500, Jessup, MD 20794

CAT#			
JOB NAME		TYPE	

48 Inch



Dimensions and specifications subject to change without notice.



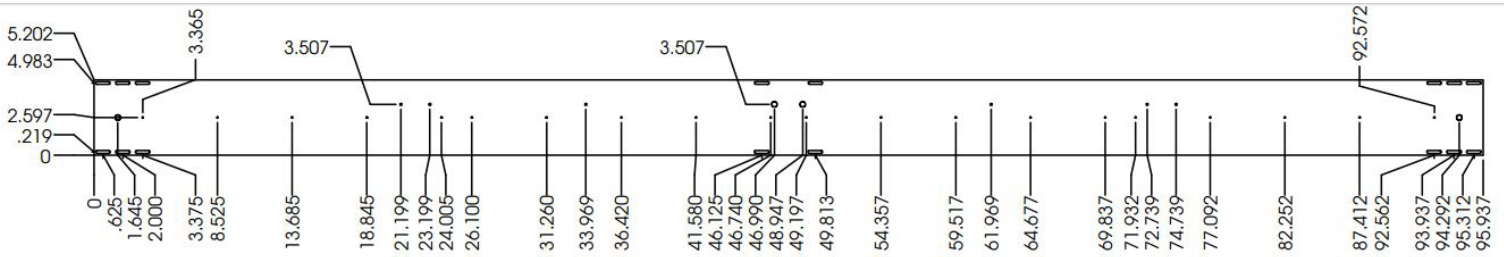
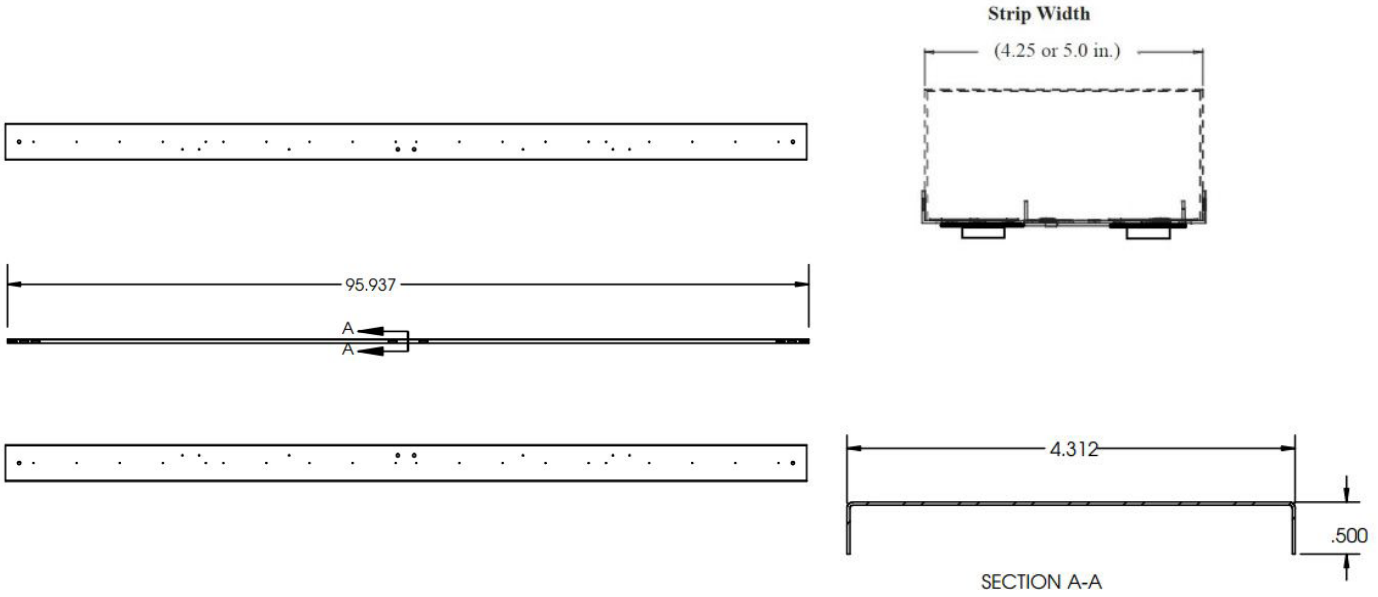
◆ 800-444-WATT ◆ www.mobern.com ◆
8200 Stayton Dr., Ste. 500, Jessup, MD 20794

CAT#

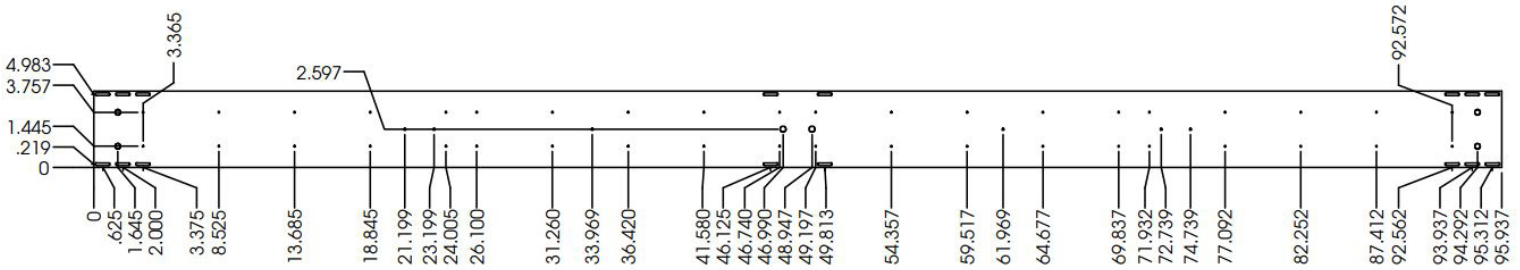
JOB NAME

TYPE

96 Inch



1 Row LED boards



2 Rows LED boards



Dimensions and specifications subject to change without notice.

◆ 800-444-WATT ◆ www.mobern.com ◆
8200 Stayton Dr., Ste. 500, Jessup, MD 20794

CAT#	
JOB NAME	TYPE