


APPLICATIONS

Premium quality flanged troffer suitable for drywall, plaster and Z-spline ceilings. Ideal for commercial and industrial buildings requiring general illumination with flanged configurations.

FEATURES & BENEFITS

- ◆  Technology - Post Powder Paint
- ◆ > 90% reflectivity
- ◆ Corrosion and scratch resistant
- ◆ Smooth edges for easy handling
- ◆ Four adjustable Uni-Lugs for easy installation
- ◆ Fixture end flanges are removable for row mounting
- ◆ Joiner channels are included
- ◆ Corner hinging for easy insertion and removal of shielding frame
- ◆ Flush steel lens frame is screw assembled for easy diffuser replacement
- ◆ Housing ends are secured by unique corner interlock and screws
- ◆ Heat sink embossments behind driver for cooler operation and longer life
- ◆ Metal to metal light leak protection on all four sides of shielding frame
- ◆ Equipped with Integral Earthquake Clips
- ◆ **ETL** listed for damp location



SPECIFICATIONS

Housing is die-formed and embossed from cold rolled steel for extra rigidity and strength. Finish is high reflectance P3 - Post Powder Paint. Designed for installation in drywall ceilings. Fixtures are installed from below the ceiling and have overlapping trim flanges. Adjustable Uni-Lugs secure the fixture to the ceiling. Listed by and bears UL label. Listed by and bears **UL** label.

ORDERING DATA

EXAMPLE: RF24LED32DMV35

RF											
Series	Size	Gear	Wattage & Lumens		Driver Type		Lens & Louvers		Color Temperature		
RF Flanged Troffer	14 1x4 24 2x4	LED	32	32 watts	3450 Lumens	DMV	0-10V	Blank	A12 .100 thick lens	30	3000K
			48	48 watts	4800 Lumens	MV	120-277V	125	A12 .125 thick lens	35	3500K
			57	57 watts	5400 Lumens			156	A19 .156 thick lens	40	4000K
								CL	Clear .100 thick lens	50	5000K
								CL125	Clear .125 thick lens		
								SW	Smooth White .100 thick lens		
								S5	Specular Parabolic Louver (1/2"x1/2"x3/8")		
								S7.5	Specular Parabolic Louver (3/4"x3/4"x3/8")		
								S1.5	Specular Parabolic Louver (1 1/2"x1 1/2"x1")		
								W5	White Parabolic Louver (1/2"x1/2"x3/8")		
								DD	Drop Dish Lens		
								A78	78 Cell (2x4) or 36 Cell (2x2)		

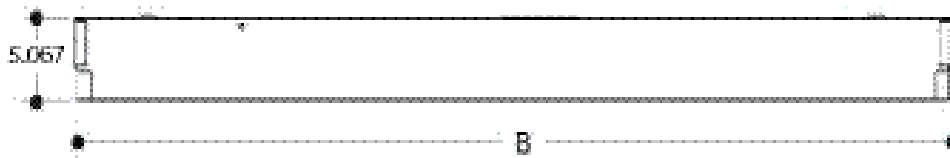
* Consult factory for 2x2 options and others

Dimensions and specifications subject to change without notice.

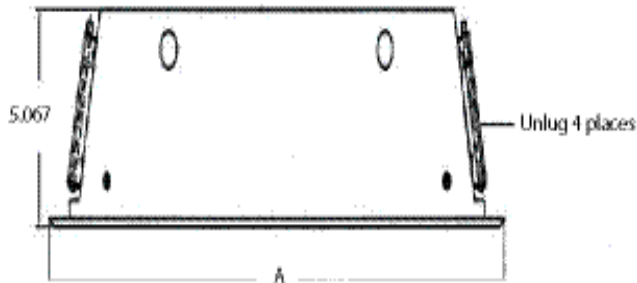


DIMENSIONS

SIDE VIEW



END VIEW



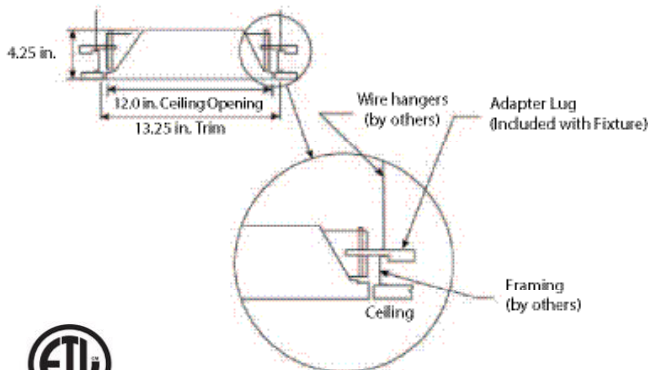
MODEL CONFIGURATION

	A	B
1' x 4'	13 1/4"	50 1/2"
2' x 4'	25 5/8"	49 3/4"

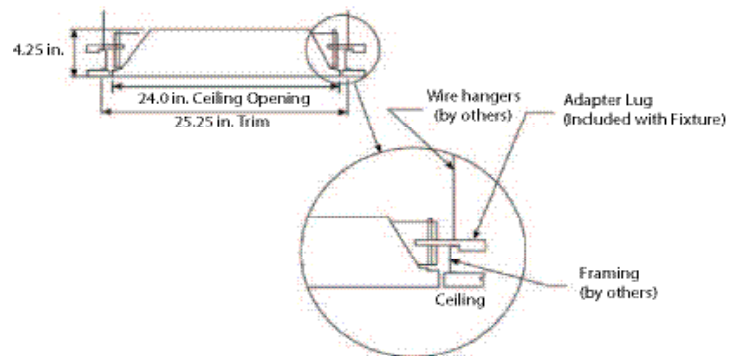
ROUGH-IN OPENINGS

	A	B
1' x 4'	11 1/4"	48 1/4"
2' x 4'	23 1/4"	48 1/4"

RF1x4 Dimensions



RF2x4 Dimensions



Dimensions and specifications subject to change without notice.



◆ 800-444-WATT ◆ www.mobern.com ◆

8200 Stayton Dr., Ste. 100, Jessup, MD 20794

CAT#

JOB NAME

TYPE