

APPLICATIONS

MDFH-VC6 aperture flat frame-in kits for (1) vertical CFL lamps. These are designed for use in non-insulated ceiling for general and task lighting. Heat sink aluminum socket housing, with vertically adjustable lamp holder may produce various focuses for different lamp types.

FEATURES & BENEFITS

Mounting Frame

- ◆ Galvanized steel construction.
- ◆ Housing adjusts for ceilings up to 1 - 1/4" thick.

Junction Box

- ◆ Listed for through branch circuit wiring. (Max.8 No 12 AWG 90°C branch circuit conductors. (4 in, 4 out)
- ◆ (5)1/2" knockouts with true pry-out slots and (4) knockouts with Romex cable clamp.
- ◆ Ground wire provided on J-box.

Reflector

- ◆ Anodized clear, haze, gold, champagne, pewter color finished full reflectors. And anodized reflectors with black or white milled groove baffle collar and glass Lens for shower trim.

Bar Hangers

- ◆ 24" Bar Hangers provide stability and support on joists and T-Bar Grid ceilings.
- ◆ Housing can be positioned at any point within 24" joist span.
- ◆ Score lines allow "toolless" shortening for 12" joists. Bar hangers may be repositioned 90 degrees.
- ◆ Integral T-bar clips snaps onto T-bars and no additional clips are required.

Trim Ring

- ◆ White plastic ring or plated chrome, stain nickel, natural steel color ring.

Socket

- ◆ G240Q/GX24Q socket for use 4 pin DTT, TTT lamps.

Socket Cap

- ◆ Heat sink aluminum cup with vertically adjustable lampholder is used to control multiple beam spreads.

Listing

- ◆ UL, c-UL listed for damp location.
- ◆ UL, c-UL listed for feed through.



Lamps

- ◆ Compact Fluorescent lamps.
 - * DTT-Double twin tube (Quad/CFQ)
 - (1) 13W DTT (4 pin)
 - (1) 18W DTT (4 pin)
 - (1) 26W DTT (4 pin)
 - * TTT-Triple Twin Tube (CFTR)
 - (1) 26W TTT (4 pin)
 - (1) 18W TTT (4 pin)
 - (1) 32W TTT (4 pin)
 - (1) 42W TTT (4 pin)
 - (1) 57W TTT (4 pin)

Ballast

- ◆ Class P Thermally protected by internal fuse (3 amp fast blow), Multi-volt electronic ballast or thermal cut-out switch in magnetic ballast.
- ◆ High Power Factor Multi-volt Electronic ballasts for 4 pin type compact fluorescent lamps mounted on J-box door for easy access from inside of fixture.

ORDERING DATA

EXAMPLE: MDFH-VC6132NE

MDFH-VC6

| Series | Lamps | Ballast |
|-----------------|---------------------|---------------------------------------|
| MDFH-VC6 | 113 (1) 13 W | NE¹ NPF Electronic |
| 6" NON-IC Flat | 118 (1) 18W | HE HPF Electronic (120/277) |
| Frame in kit | 126 (1) 26W | HEDM7 Mark 7 Dimming (120/277) |
| | 132 (1) 32W | HED1 Mark 10 Dimming (120V) |
| | 142 (1) 42W | HED2 Mark 10 Dimming (277V) |
| | 157 (1) 57W | HELD1 Lutron Compact SE (120V) |
| | | HELD2 Lutron Compact SE (277V) |

*Other Dimming Products Available. Consult With Factory.
*1% Lutron Hi-Lume Limited Use For (1)26W & (1)32W TTT.

(For use with (1)13W, 18W & 26W 120V only)

• Just-A-Nail

Adjustable nail hanger bar for easy alignment.



JUST-A-NAIL

*Pre-installed nail bars with vertical slots are used to evenly align the bars horizontally after nailing halfway into wood joists.

• Optional "Quick Connect" Push-in wire connectors.

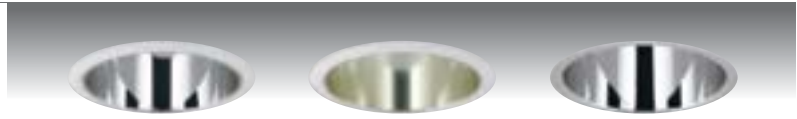
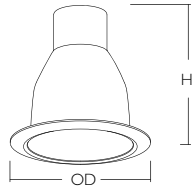
- Three "Quick Connectors"
- Pre-installed push-in wire connectors for fast and easy wiring.

Dimensions and specifications subject to change without notice.

6" Vertical Compact Fluorescent Trims

MDFT-V64 MDFT-V64SF (Self-Flanged)

Specular Open Reflector
57W TTT, DTT
White Plastic Trim Ring
O.D : 7-7/8 " "
Height : 7-1/4 " "



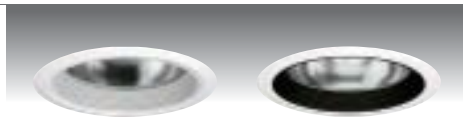
MTFT-V64SM

MTFT-V64GD

MTFT-V64SF-SM

MTFT-V614

Baffle w/ Reflector 57W
TTT, DTT White Plastic Trim
Ring O.D : 7-7/8 " "
Height : 7-1/4 " "



MTFT-V614WH

MTFT-V614BK

MTFT-V636

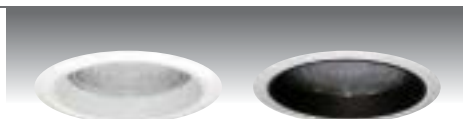
Wall Wash w/ Kick-off Plate
57W TTT, DTT
White Plastic Trim Ring
O.D : 7-7/8 " "
Height : 7-1/4 " "



MTFT-V636SM

MTFT-V641

Baffle w/ Fresnel Lens
42W TTT, DTT
White Plastic Trim Ring
O.D : 7-7/8 " "
Height : 7-1/4 " "

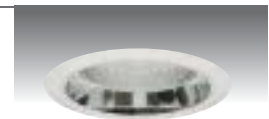


MTFT-V641WH

MTFT-V641BK

MTFT-V622

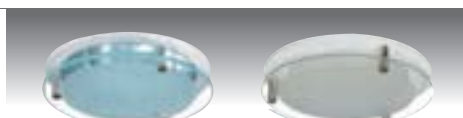
Reflector w/ Fresnel Lens
42W TTT, DTT
White Plastic Trim Ring
O.D : 7-7/8 " "
Height : 7-1/4 " "



MTFT-V622CL

MTFT-V640

Reflector w/ Frosted Drop Lens
57W TTT, DTT
White Metal Trim Ring
O.D : 7-7/8 " "
Height : 7-1/4 " "



MTFT-V640SM

MTFT-V640WH

MTFT-V650

Reflector w/ Frosted 3.5" Center
Hole Lens
57W TTT, DTT
White Metal Trim Ring
O.D : 7-7/8 " "
Height : 7-1/4 " "



MTFT-V650SM

MTFT-V629

Reflector w/ Cross Louver Blade
42W TTT, DTT
White Plastic Trim Ring
O.D : 7-7/8 " "
Height : 7-1/4 " "



MTFT-V629SM

MTFT-V646

Reflector w/ Wall Wash Plate
42W TTT, DTT
White Plastic Trim Ring
O.D : 7-7/8 " "
Height : 7-1/4 " "



MTFT-V646SM

- ◆ White plastic ring standard. Also available with metal rings.
- ◆ All trims are damp location, Lens trims are wet location listed

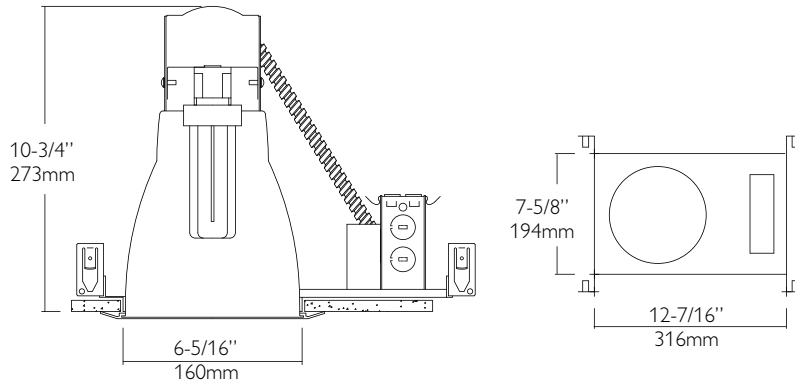
ORDERING DATA

EXAMPLE: CLRFWHWH

| Reflector | | Lens | | Baffle | | Metal Ring | |
|-----------|----------------|------|------------|--------|----------------|------------|----------------|
| CL | Clear | FR | Fresnel | WH | White | WH | White |
| WH | White | AS | All Sanded | BK | Black | BK | Black |
| GD | Gold | CL | Clear | SN | Satin Nickel | SN | Satin Nickel |
| MA | Matte Platinum | CV | Convex | AN | Antique Nickel | AN | Antique Nickel |
| CP | Champagne | | Prismatic | AC | Antique Copper | AC | Antique Copper |
| PR | Pewter | AL | Albalite | MO | Mocha | MO | Mocha |
| SM | Semi-Matte | | | CA | Cappuccino | CA | Cappuccino |
| | Clear | | | CH | Chrome | CH | Chrome |
| | | | | UN | Natural Steel | UN | Natural Steel |
| | | | | PB | Polished Brass | PB | Polished Brass |

Dimensions and specifications subject to change without notice.

DIMENSIONS



Ceiling Cut-out : 6-1/2"
Lamp, Max, Watt : Max. 57W



Dimensions and specifications subject to change without notice.



◆ 800-444-WATT ◆ www.mobern.com ◆
8200 Stayton Dr., Ste. 500, Jessup, MD 20794

| | | | |
|----------|--|------|--|
| CAT# | | | |
| JOB NAME | | TYPE | |