

### APPLICATIONS

The **FHBC LED** is a high efficiency premier high bay fixture engineered for premium performance. A precision-formed reflector system available in enhanced white reflector is designed to achieve maximum light output for ceilings from 15 feet to 40 feet. Based on ceiling height, these fixtures can replace a fluorescent or traditional HID high bay while using 50% or less energy. Pendant, chain or stem mounting are available. The fixture is ideal suited for warehouses, manufacturing plants, sports facilities and retail spaces.

### FEATURES & BENEFITS

- ◆ 0-10V Dimming Driver standard
- ◆ Pendant, stem, cable, or chain hanging available
- ◆ Options and accessories include: Wireguard, lens, occupancy sensors, emergency packs and more
- ◆ Warranted up to 45°C ambient temperature. Consult for higher temp ratings.
- ◆ L<sub>70</sub> >100,000 hrs.
- ◆ Min CRI 80
- ◆ cETL<sub>US</sub> Listed



### SPECIFICATIONS

Housing is 22 gauge painted steel. Access plate in the back makes wiring fast and hassle-free. Back of fixture is designed with built in mounting holes for long hanger or cable kit. The fixture is not designed to be surface mounted to the ceiling or wall. Integral Occupancy Sensor is optional and is ideal for wire guard applications.

### ORDERING DATA

EXAMPLE: FHBC24LED48DMV40

FHBC		LED		Driver		Color Temp		Options & Accessories				
Series	Size	Gear	Wattage/Lumens									
FHBC LED Premier High Bay	24 24" Length	LED	<b>High Performance</b>		DMV	0-10V Dimming Multivolt 120-277VAC	30 3000K	35 3500K	40 4000K	50 5000K	See Options and Accessories Section	
	48 48" Length		<b>24"</b>									
			48	48 Watts 6400 Lumens	D480TF	480V with transformer 0-10V Dimming						
			57	57 Watts 7640 Lumens								
			63	63 Watts 9000 Lumens								
			72	72 Watts 10440 Lumens								
			90	90 Watts 12060 Lumens								
			100	100 Watts 13480 Lumens								
			114	114 Watts 16000 Lumens								
			144	144 Watts 19000 Lumens								
			<b>48"</b>									
			57	57 Watts 8000 Lumens								
			97	97 Watts 13795 Lumens**								
			114	114 Watts 17560 Lumens**								
			H118	H118 Watts 16600 Lumens*								
			127	127 Watts 18000 Lumens								
			144	144 Watts 21305 Lumens**								
			162	162 Watts 24000 Lumens								
			166	166 Watts 25150 Lumens**								
			180	180 Watts 26855 Lumens**								
			195	195 Watts 28410 Lumens**								
			208	208 Watts 31440 Lumens								
			216	216 Watts 30000 Lumens								
			270	270 Watts 40285 Lumens								
			272	272 Watts 36000 Lumens								

\* DLC Listed - standard 5000K

\*\* DLC Premium Listed - 3500K, 4000K, 5000K

Wattage and Lumens are calculated at 25°C ambient temp and 5000K.  
A tolerance of ± 10% is standard for both wattage and lumens.  
Dimensions and specifications subject to change without notice



◆ 800-444-WATT ◆ www.mobern.com ◆  
8200 Stayton Dr., Ste. 500, Jessup, MD 20794

CAT#

JOB NAME

TYPE

### SUPER HIGH PERFORMANCE 150+ LPW

#### ORDERING DATA

EXAMPLE: FHBC242R-LEDSH48DMV30

FHBC		Wattage & Lumens		Driver Type		Color Temp		Options & Accessories	
Series	Size								
<b>FHBC</b>	<b>24</b> 24" Length	<b>24"</b>		<b>DMV</b>	0-10V Dimming Multivolt	<b>30</b>	3000K	<b>See Options and Accessories Section</b>	
LED Premier High Bay	<b>48</b> 48" Length	<b>4R-LEDSH48</b>	48 Watts 7400 Lumens		120-277VAC	<b>35</b>	3500K		
		<b>4R-LEDSH57</b>	57 Watts 8600 Lumens	<b>D480TF</b>	480V with transformer 0-10V Dimming	<b>40</b>	4000K		
		<b>6R-LEDSH87</b>	87 Watts 13050 Lumens			<b>50</b>	5000K		
		<b>8R-LEDSH121</b>	121 Watts 18220 Lumens						
		<b>48"</b>							
		<b>3R-LEDSH87</b>	87 Watts 13050 Lumens						
		<b>4R-LEDSH121</b>	121 Watts 18220 Lumens						
		<b>5R-LEDSH131</b>	131 Watts 20030 Lumens						
		<b>6R-LEDSH161</b>	161 Watts 24290 Lumens						
		<b>8R-LEDSH195</b>	195 Watts 30030 Lumens						
		<b>8R-LEDSH230</b>	230 Watts 34500 Lumens						

Wattage and Lumens are calculated at 25°C ambient temp and 5000K.  
A tolerance of ± 10% is standard for both wattage and lumens.

#### TECHNICAL INFORMATION

##### OPTIONS-Factory Installed

EM5	5 Watts, 800 Lumens Battery Backup
EM7	7 Watts, 1100 Lumens, Battery Backup
EM	10 Watts, 1600 Lumens Battery Backup
EM12	12 Watts, 1900 Lumens, Battery Backup
OS	Occ Sensor - On/Off
OSD	Occ Sensor w/Dimming & Daylight Harvesting
DH	Daylight Harvesting
CS	6' Cord 18/3
CS8	8' Cord 18/3
CS12	12' Cord 18/3
CS8TL277	8' Cordset 277V, 3-WIRE, NEMA L7-15P
WP	6' Whip-MC
WP12	12' Whip-MC
WG	Wraparound Wire Guard
2NR	Narrow Option

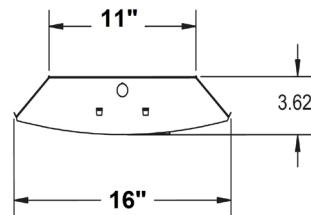
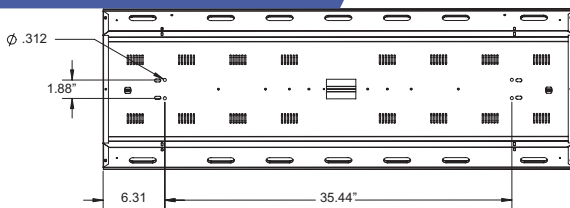
##### ACCESSORIES

L1080	FHBC Lens Wraparound for 48" Body-Clear
L1080-2FT	FHBC Lens Wraparound for 24" Body-Clear
L1080-FR	FHBC Lens Wraparound for 48" Body-Frosted
L1080-2FT-FR	FHBC Lens Wraparound for 24" Body-Frosted
A-FHBC6WG	Wireguard - No door frame for 48" Body
A-FHBC6WG-2FT	Wireguard - No door frame for 24" Body

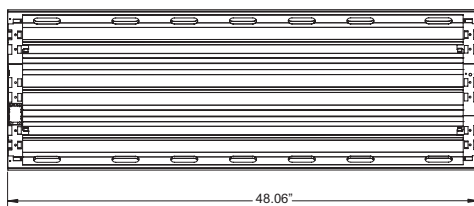
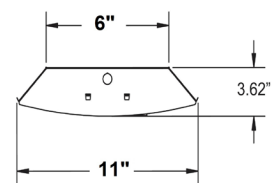
##### MOUNTING

A144-XX	Footage - Tong hangers, End Mount (Pair) with footage of chain (xx=footage of chain)
AC120-Toggle-2PK	yhook - 10' Cable Mounting Kit and 2 Spring Clips
AC180-Toggle-2PK	yhook - 15' Cable Mounting Kit and 2 Spring Clips

#### DIMENSIONS



(2NR Narrow Option)



Dimensions and specifications subject to change without notice.



◆ 800-444-WATT ◆ www.mobern.com ◆  
8200 Stayton Drive, Ste. 500. Jessup, MD 20794

CAT#

JOB NAME

TYPE