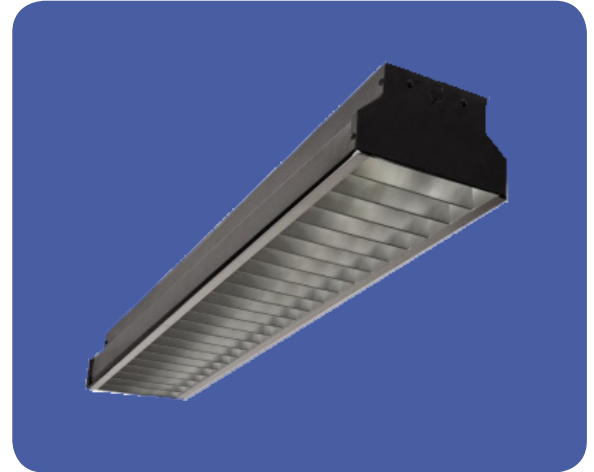


APPLICATIONS

The DLV Modern Louvered Industrial Strip can change the look of any space with this modern suspended industrial fixture. It provides a blast of light that's glare-free with the semi specular parabolic louver. Suspended on cables, the hanging Powder Coat Finish fixtures look stylish in any setting. Illuminate any workspace. It is ideal for corridors, lobbies and other office areas.

FEATURES & BENEFITS

- ◆ SIZE W x L x H in inches (mm) 8.0W x 49.0L x 6.5H
- ◆ 2 lamp positions, Available in T8 or T5
- ◆ Fixtures are hung by pendant by stem or cable
- ◆ Welded heavy gauge steel flanges can be ordered to accept 3/8" threaded stems.
- ◆ Emergency ballasts, Cord sets, whips, occupancy sensors
- ◆ Hanging kits, Wire guards.
- ◆ Fixtures conform to Underwriters' Laboratories standards for production and are carefully tested prior to packing.



SPECIFICATIONS

The Housing is Die-formed cold rolled steel body with heavy duty construction. Mates with Parabolic louver which is a silver anodized, parabolic with optional slots on the side of louver. End cap complete the finished louvered look.

ORDERING DATA

EXAMPLE: DLV 232MVWH

DLV							
Series	# Lamps	Lamp Type ¹		Ballast ¹	Finish ¹	Options	Cord/Canopy Finish
DLV Louvered Industrial Strip	2 per cross section	28	26" T5	MV 120 - 277V	BK Black	See Below	W White
		28TAN	26" T5 TAN	120 120V	BZ Bronze		B Black
		32	48" T8	277 277V	IR Iron		BKWH Black Cord & White Canopy
		32TAN	48" T8 TAN		SL Silver		
		54	46" T5HO		WH White		
		54TAN	46" T5HO TAN				

OPTIONS

B1	Emergency ballast, 500 lumens
B3 [4]	Emergency ballast, 1400 lumens
HC301WH	Cable kit with 4' Cable & Power Feed/Cable Incl. and White Canopy
HC302WH	Cable kit with 12' Cable and Power feed/Cable Incl. and White Canopy
2SCS24WH	Two Stem kits with 24" Stem, Canopy and Mounting hardware for a 4' fixture

NOTES

- [1] Consult Factory for additional lamps, ballasts, finishes, and options.
 [2] Custom louvers available in any cell configuration. Consult factory for additional information.

Standard with 4' cable and 4' power feed/cable included. For 12' cable kit add C12 to end of catalog number. Other finishes available. Standard with painted body inside and outside, combined with semi specular reflector and louver blades.

Dimensions and specifications subject to change without notice.

