

APPLICATIONS

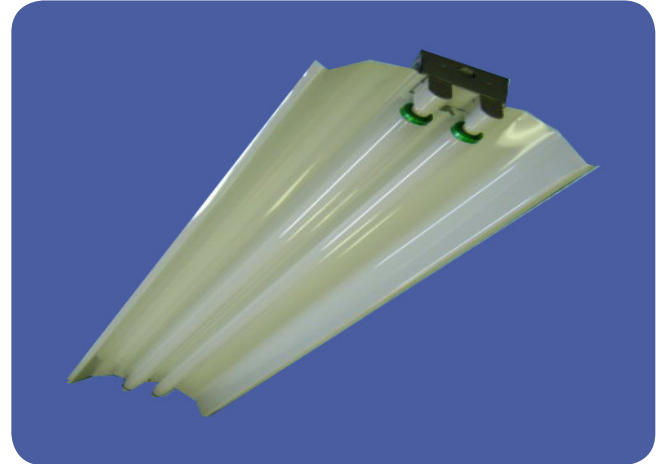
Heavy duty fluorescent industrial fixture. For use in indoor applications where industrial grade is required. Ideal for factories, warehouses, workshops, garages, utility areas and public buildings.

FEATURES & BENEFITS

- ◆ Deep housing with longitudinal ribs for added structural stability
- ◆ Versatile end plate couples as coupler for precise continuous row mounting
- ◆ Solid one piece reflectors for 6' and 8' lamps
- ◆ Available in lengths from 48 inches - (4', 6', 8' lengths)
- ◆ Optional upright reflector available
- ◆ Single and continuous row mounting capability
- ◆ Surface, stem or chain mountable
- ◆ Uses T5, T8 or T12 lamps
- ◆ **UL** listed for damp location

SPECIFICATIONS

Housing and ends are die-formed from cold rolled steel. Finish is high reflectance baked white enamel. Standard reflectors are solid with high reflectance baked white enamel finish. Single piece reflector on non-tandem units. Knockouts are provided for flexible and conduit attachment. Mounting holes are provided. Listed by and bears **UL** label.



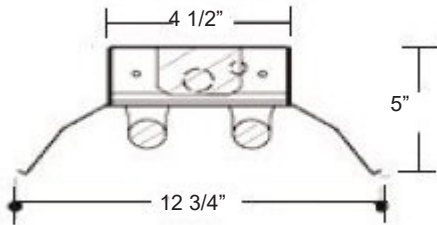
ORDERING DATA

EXAMPLE: 8 2 48 UP ELOHO DT B2

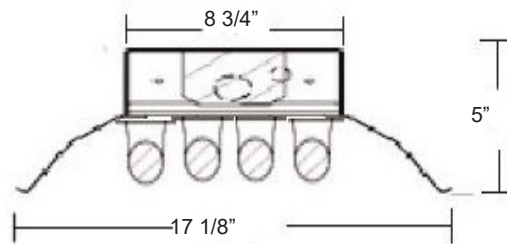
Series	Lamp Size	Reflector	Ballast Type	Options
8	32 T8 48"	Blank Solid Reflector	MV Multi-volt 120-277V	B1 Battery backup 1 lamp
# of Lamps	48 T8HO/T12HO 48"	UP 15% upright	120 120 Volt	B2 Battery backup 2 lamp
1 1 Lamp	54 T5HO 46"	TAN 8' length	277 277 Volt	11 Dual ballast 1 lamp + 1 lamp
2 2 Lamp	72 T8HO/T12HO 72"	(Available in 1 & 2 light)	PMV Program Multi-volt	22 Dual ballast 2 lamp + 2 lamp
3 3 Lamp	96 T8SL 96"		LED** Wired 1 end hot for T8 LED tubes	RIF Radio interference filter
4 4 Lamp	96 T8HO/T12HO 96"		LED2E** Wired 2 ends hot for T8 LED tubes	

** Assembled with no ballast, made for UL Listed, self ballasted retrofit T8 LED lamps

*Call for additional options



1 and 2 Light



3 and 4 Light

Dimensions and specifications subject to change without notice.



CAT#	
JOB NAME	TYPE