



L I G H T I N G

Professional Series

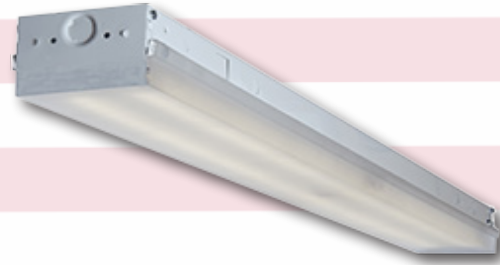
44 PLED LED 4.25" Industrial Strip

APPLICATIONS

Premium grade LED strip fixture. For use in indoor applications such as factories, warehouses, workshops, utility areas, coves and public buildings where industrial grade, ultimate energy savings is required.

FEATURES & BENEFITS

- ◆ Snap-on components for easy assembly and maintenance
- ◆ Versatile end plate doubles as coupler for continuous row mounting
- ◆ Available in 24", 48", and 96" (2', 4', & 8' lengths) Consult for 6' length
- ◆ Surface, stem or chain mountable
- ◆ Min CRI 80
- ◆ ETL Listed for damp location
- ◆ Made with US Steel
- ◆ BAA/ARRA Compliant



SPECIFICATIONS

Housing is die-formed from cold rolled steel. Finish is high reflectance baked white enamel. Single wireway cover on non-tandem units. Knockouts are provided for flexible conduit attachment. Knockouts are provided for stem mounting. Mounting holes are provided.

ORDERING DATA

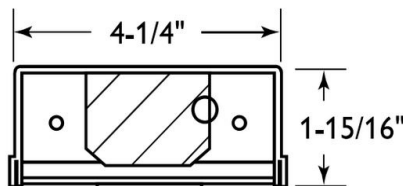
EXAMPLE: 44-48PLED37DMV40

Series	Size	Suffix	Gear	Driver	Lens	Color Temp	Options
44 LED Premium Channel	24 24" 48 48" 96 96"	P (Professional)	LED	DMV 120-277 VAC 0-10V Dimmable	Blank No Lens FR Frosted Lens	30 3000K 35 3500K 40 4000K 50 5000K	LR Lens ready (Lens must be ordered on separate line) WP 6' Whip 3 Wire EM Emergency Battery Pack EM7 Emergency Battery Pack EM5 Emergency Battery Pack
Wattage / Lumens							
				2 ft.			
				22 22 Watts 2800 Lumens			
				4 ft.			
				22 22 Watts 2800 Lumens			
				37 37 Watts 5035 Lumens			
				8 ft.			
				37 37 Watts 5035 Lumens			
				74 74 Watts 10070 Lumens			

Accessories

- A69 - Wireguard per 4 ft.
- A144 - (2) V-Hook & (2) 2 ft chain
- L1085 - 4 ft. (Order 2 for tandem)
- M39-LED - (ends to add lens; need 2 per fixture)

DIMENSIONS



Dimensions and specifications subject to change without notice.

◆ 800-444-WATT ◆ www.mobern.com ◆
8200 Stayton Dr., Ste. 500, Jessup, MD 20794

CAT#

JOB NAME

TYPE



Professional Series

44 PLED
LED 4.25" Industrial Strip

Wattage & Lumens

Part Number	Input Wattage	Delivered Lumens							
		3000K		3500K		4000K		5000K	
		No Lens	FR Lens	No Lens	FR Lens	No Lens	FR Lens	No Lens	FR Lens
44-24PLED22	22	2618	2415	2708	2497	2800	2583	2848	2628
44-48PLED22	22	2618	2415	2708	2497	2800	2583	2848	2628
44-48PLED37	37	4709	4380	4870	4529	5037	4685	5124	4766
44-96PLED37	37	4709	4380	4870	4529	5037	4685	5124	4766
44-96PLED74	74	9418	8759	9740	9059	10074	9369	10249	9532

Dimensions and specifications subject to change without notice.



800-444-WATT www.mobern.com
8200 Stayton Dr., Ste. 500, Jessup, MD 20794

CAT#	
JOB NAME	TYPE