

APPLICATIONS

Typical applications for this SmartSense Series include open office cubicles, offices, conference rooms, restrooms and hallways. This technology also provides superior detection in hard surfaced areas, such as stairwells and hallways. Bi-level lighting control is available (consult factory for options) resulting in up to 50% energy savings for fixtures that are on 24-hours a day, seven days a week, while still providing enough light for safety and egress.



FEATURES & BENEFITS

- ◆ Includes Ultrasonic Smart Sensor
- ◆ White opal acrylic wraparound diffuser with an optional prismatic lens
- ◆ Screw fastened end caps secure diffuser in place
- ◆ Individual or continuous row application
- ◆ cETL_{us} listed for damp location

SPECIFICATIONS

Versatile linear LED fixture available with integral ultrasonic occupancy sensor to sense motion within a space and automatically turns lights on even when the sensor has no direct line of sight to occupants. When the area is vacated and the time delay has elapsed, the sensors automatically dim the lights. Ultrasonic detection operates by transmitting sound waves throughout an area and measuring the speed at which they return. Movement increases the return frequency, which triggers occupancy. Ultrasonic Smart Sensors provide functions for testing, time delay overriding the fixture 'ON'.

ORDERING DATA

EXAMPLE: 155SW24LED24DMV30-10

155SW		LED								Unoccupied Setting		
Series	Size	Gear	Watts/Lumens		Driver*	Color Temp						
155SW SmartSense Stairwell Bracket	24	24"			DMV 120-277VAC Multivolt 0-10V Dimmable	30	3000K			-10	10%	
	48	48"				35	3500K			-20	20%	
			LED			40	4000K			-30	30%	
						50	5000K			-40	40%	
										-50	50%	
										-60	60%	
									-70	70%		
									-80	80%		
									-90	90%		

Options

EM 10 Watts, 1600 Lumens
Battery Backup

DLC Premium Listed (4 ft DMV only)	
155SW-48LED30DMVxx	XX=30, 35,40, 50
155SW-48LED48DMVxx	XX=30, 35,40, 50
155SW-48LED57DMVxx	XX=30, 35,40, 50

*Consult for Triac dimming
Consult for options

Dimensions and specifications subject to change without notice.



◆ 800-444-WATT ◆ www.mobern.com ◆
8200 Stayton Dr., Ste. 500, Jessup, MD 20794

CAT#

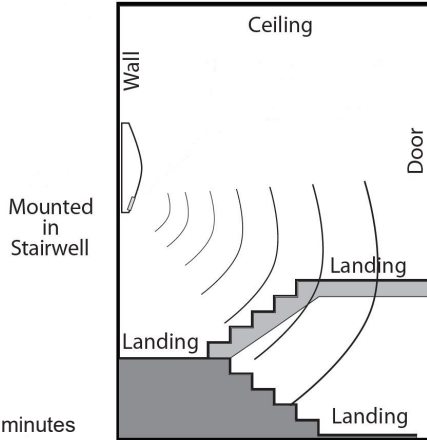
JOB NAME

TYPE

TECHNICAL INFORMATION



Ultrasonic technology for open area detection with line-of-sight obstructions

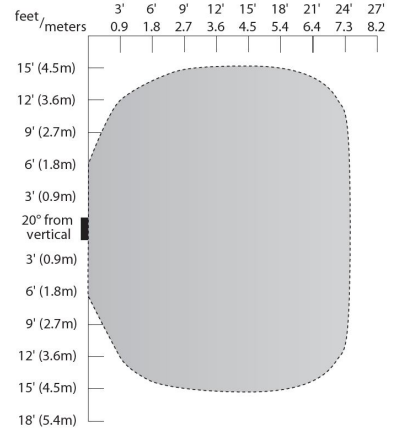


Features

Time Delay: 5 to 30 minutes
Coverage at 8' height, 24' diameter

Wiring & Coverage

Coverage Patterns
@ 8 ft Mounting Height



Dimensions and specifications subject to change without notice.



◆ 800-444-WATT ◆ www.mobern.com ◆

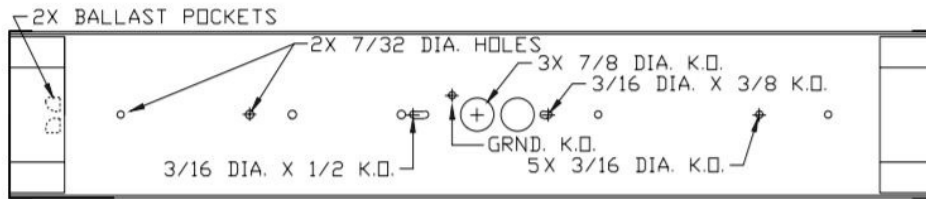
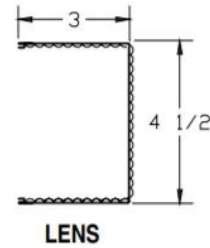
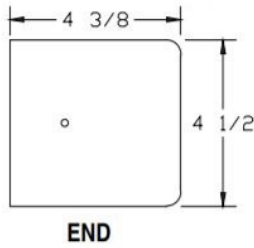
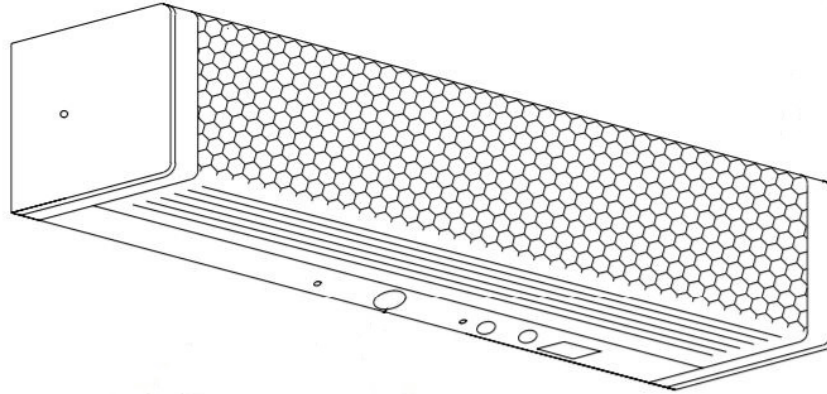
8200 Stayton Dr., Ste. 500, Jessup, MD 20794

CAT#

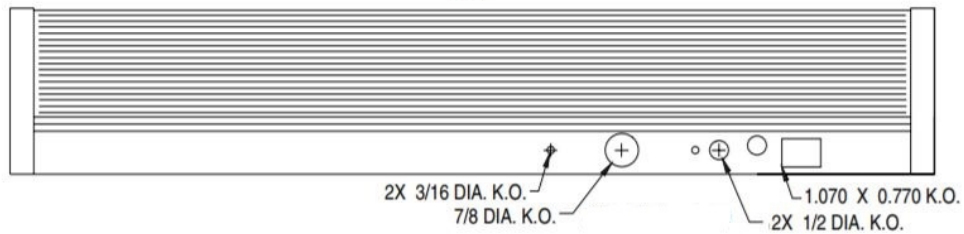
JOB NAME

TYPE

Dimensions



TOP



Dimensions and specifications subject to change without notice.



◆ 800-444-WATT ◆ www.mobern.com ◆
8200 Stayton Dr., Ste. 500, Jessup, MD 20794

CAT#	
JOB NAME	TYPE